

I LINE



Pre-wired trunking sections available in 3 lengths

Ideal solution for retail and industrial applications

Lighting modules plug into trunking spines



Lighting for
a Living

I LINE



- Pre-wired trunking sections available in 3 lengths
- Ideal solution for retail and industrial applications
- Lighting modules plug into trunking spines
- Lighting modules with a choice of 4 different optics
- Full range of gear options including DALI and emergency
- 3-circuit lighting track module for use with TamLite track spots
- Wire suspension or surface mounting
- 'X', 'L' or 'T' connectors for full system design
- Finished in white (RAL 9016)



A. PRE-WIRED TRUNKING

Available in nominal 600mm, 1500mm and 3000mm lengths and pre-wired with 11 pole, 2.5mm² PVC wiring loom for use with DALI Dimmable circuit and emergency.



B. LED LIGHTING MODULES

LED lighting modules that plug into the pre-wired trunking sections. Available in three power outputs and with a choice of wide, narrow, asymmetric or double asymmetric distributions. DALI control gear is supplied as standard, with a 3 hours maintained emergency option.



C. MODULE OPTIONS

3 circuit track and snap-fit blanking cover plates can be added in 600mm & 1500mm lengths.



D. CONNECTION NODES

Connection nodes allow for full system flexibility. Mains feed kit and wire suspensions provide assembly options.

I LINE

SYSTEM TRUNKING



- Pre-wired trunking sections available in 3 lengths
- Ideal solution for retail and industrial applications
- Extruded aluminium trunking rail for surface or suspended mounting
- Supplied with pre-assembled 11 pole rail connector to accommodate 3 mains circuits with the addition of DALI and emergency connections
- Maximum system rating per circuit is 16A (3500W)
- Maximum circuit length is 150m

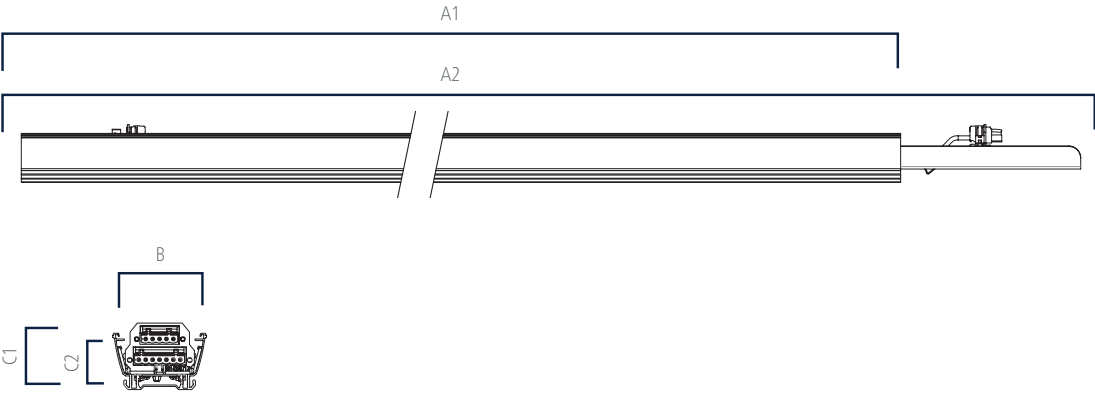
Trunking rail

| Order Code | Description | kg |
|------------|-------------------------------|------|
| ILT211 | 11 pole trunking rail, short | 0.68 |
| ILT511 | 11 pole trunking rail, medium | 1.38 |
| ILT1011 | 11 pole trunking rail, long | 2.76 |

Dimensions (mm)

| Order Code | A1 - A2 | B | C1 * | C2* |
|------------|-------------|----|------|-----|
| ILT211 | 570 - 720 | 68 | 48 | 41 |
| ILT511 | 1416 - 1566 | 68 | 48 | 41 |
| ILT1011 | 2832 - 2932 | 68 | 48 | 41 |

*Depth of Trunking Rail only
Recommended maximum fixing distance is 3000mm. Please see page 122 for fixing accessories.



I LINE
MODULES



- Ideal solution for retail and industrial applications
- DALI dimming control gear as standard with emergency option available
- Simple easy to fit lock in system allows a flexible and speedy installation
- High efficiency LED light module with a choice of wide, narrow, asymmetric and double asymmetric optics
- CRI: Ra>80
- Up to 156 lumens per Watt efficacy
- 50,000 hours lifetime (L70/B50)



5 YR

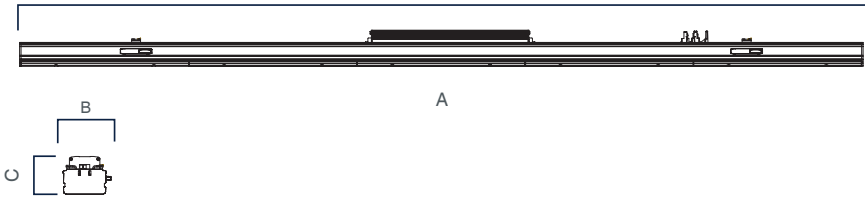
IP20

Light modules

| Order Code | Description | lm | W | lm/W | kg |
|------------|-------------------------------|-------|----|------|------|
| ILM535DA11 | 35W - 4000K Double asymmetric | 5450 | 35 | 156 | 2.10 |
| ILM535WB11 | 35W - 4000K Wide beam | 5350 | 35 | 153 | 2.10 |
| ILM535NB11 | 35W - 4000K Narrow beam | 5450 | 35 | 156 | 2.10 |
| ILM555DA11 | 55W - 4000K Double asymmetric | 8300 | 55 | 151 | 2.10 |
| ILM555WB11 | 55W - 4000K Wide beam | 8150 | 55 | 148 | 2.10 |
| ILM555NB11 | 55W - 4000K Narrow beam | 8300 | 55 | 151 | 2.10 |
| LM575DA11 | 75W - 4000K Double asymmetric | 10800 | 75 | 144 | 2.10 |
| ILM575WB11 | 75W - 4000K Wide beam | 10600 | 75 | 141 | 2.10 |
| ILM575NB11 | 75W - 4000K Narrow beam | 10800 | 75 | 144 | 2.10 |

Dimensions

| Order Code | A (mm) | B (mm) | C (mm) |
|------------|--------|--------|--------|
| ILM535DA11 | 1416 | 73 | 80 |
| ILM535WB11 | 1416 | 73 | 80 |
| ILM535NB11 | 1416 | 73 | 80 |
| ILM555DA11 | 1416 | 73 | 80 |
| ILM555WB11 | 1416 | 73 | 80 |
| ILM555NB11 | 1416 | 73 | 80 |
| LM575DA11 | 1416 | 73 | 80 |
| ILM575WB11 | 1416 | 73 | 80 |
| ILM575NB11 | 1416 | 73 | 80 |



CONSTRUCTION

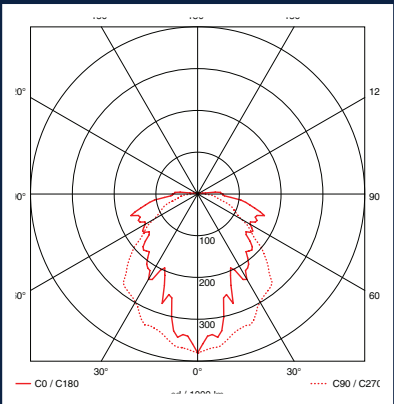
- Extruded aluminium body finished in white (RAL 9016)
- Simple push-fit into the trunking rail
- Supplied with a DALI dimmable driver as standard
- Supplied as standard with neutral white (4000K) LED

OPTIONS

| | |
|----|------------------------------|
| M3 | 3 hours integrated emergency |
| A3 | Auto self test |
| D3 | DALI self test |

TO SPECIFY

Pre-wired linear lighting system range as per TamLite I LINE Modules



I LINE

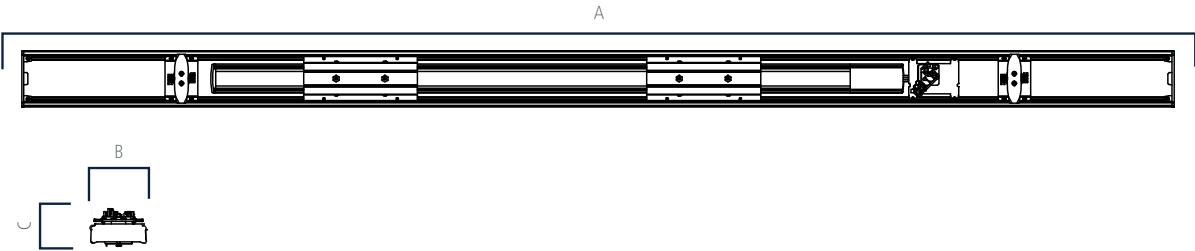
3 CIRCUIT TRACK



- For many retail, display and accent areas the use of track spotlights continues to be the choice for lighting designers
- The I LINE offers the integration of the Tamlite TRIO 3-circuit track system into the trunking rails with a wide range of spotlights to suit
- The track module simply snap-fits in as all others do and can be easily configured to use 1, 2 or 3 circuits for many different effects
- The track modules are available in nominal 600mm and 1500mm lengths

3 Circuit track modules

| Order Code | Description | A (mm) | B (mm) | C (mm) | kg |
|------------|-------------------------|--------|--------|--------|------|
| ILT3T211 | 3 Circuit Track Modules | 568 | 73 | 24 | 0.71 |
| ILT3T511 | 3 Circuit Track Modules | 1416 | 73 | 24 | 1.78 |



EUROPA - Track Mounted LED Spotlight

- Fully adjustable, slim profile LED track spotlight with integral driver
- Die-cast aluminium body – White (RAL 9016)
- Philips module and driver – 50,000 hours (L70/B50)
- Supplied with 45° wide beam reflector
- Available in black (RAL 9005) and silver body options
- CRI: Ra>80
- Up to 89 lumens per watt efficacy
- Supplied as standard with warm white (3000K) LED

| Order Code | Description | lm | W | lm/W | kg |
|-------------|-------------|------|----|------|------|
| TD20TS19L3T | 19W - 3000K | 1700 | 19 | 89 | 0.90 |
| TD20TS28L3T | 28W - 3000K | 2700 | 28 | 96 | 0.90 |

Please see page 136 for full EUROPA product details



TS SPOT - High Output Track Spot With Integral Driver

- Fully adjustable, high output LED track spotlight
- Die-cast aluminium body – White (RAL 9016)
- Philips module and driver – 50,000 hours (L70/B50)
- Supplied with 24° narrow beam reflector, with 40° wide beam available
- CRI: Ra>80
- Up to 91 lumens per watt efficacy
- Supplied as standard with neutral white (4000K) LED

| Order Code | Description | lm | W | lm/W | kg |
|------------|-------------|------|----|------|------|
| TS390NW | 43W - 4000K | 3900 | 43 | 91 | 1.80 |
| TS390NWWB | 43W - 4000K | 3900 | 43 | 91 | 1.80 |

Please see page 134 for full TS SPOT product details



I LINE CONNECTORS

'L' NODE CONNECTOR

- L connector for system linking
- Finished in white (RAL 9016) with power feed in option



| Order Code | Description |
|------------|-------------|
|------------|-------------|

| | |
|-----------|---|
| ILLN11BPF | 'L' Node connector with power feed - type B |
|-----------|---|



| Order Code | Description |
|------------|-------------|
|------------|-------------|

| | |
|---------|-----------------------------|
| ILLN11B | 'L' Node connector - type B |
|---------|-----------------------------|



| Order Code | Description |
|------------|-------------|
|------------|-------------|

| | |
|-----------|---|
| ILLN11APF | 'L' Node connector with power feed - type A |
|-----------|---|



| Order Code | Description |
|------------|-------------|
|------------|-------------|

| | |
|---------|-----------------------------|
| ILLN11A | 'L' Node connector - type A |
|---------|-----------------------------|

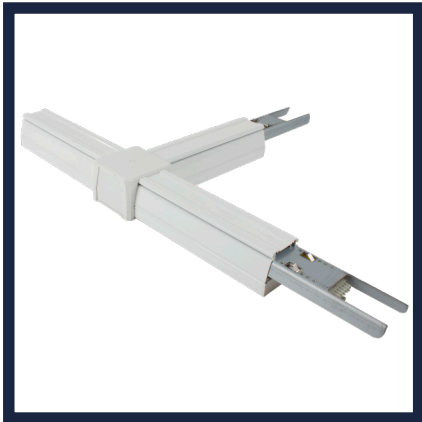
'T' NODE CONNECTOR

- T connector for system linking
- Finished in white (RAL 9016) with power feed in option



| Order Code | Description |
|------------|-------------|
|------------|-------------|

| | |
|-----------|---|
| ILTN11BPF | 'T' Node connector with power feed - type B |
|-----------|---|



| Order Code | Description |
|------------|-------------|
|------------|-------------|

| | |
|---------|-----------------------------|
| ILTN11B | 'T' Node connector - type B |
|---------|-----------------------------|



| Order Code | Description |
|------------|-------------|
|------------|-------------|

| | |
|-----------|---|
| ILTN11APF | 'T' Node connector with power feed - type A |
|-----------|---|



| Order Code | Description |
|------------|-------------|
|------------|-------------|

| | |
|---------|-----------------------------|
| ILTN11A | 'T' Node connector - type A |
|---------|-----------------------------|

I LINE

FIXING ACCESSORIES



X NODE CONNECTOR

- X connector for system linking
- Finished in white (RAL 9016)

| Order Code | Description |
|------------|--------------------|
| ILXN | 'X' Node connector |



POWER FEED

- Power feed supply box with in/out cable entry and 11 pole termination
- Finished in white (RAL 9016) with screwed down plastic cover

| Order Code | Description |
|------------|-------------------|
| ILPF11 | Power feed-in box |



END CAP

- Plastic end cap finished in white (RAL 9016)
- 1 required for each end of run if power feed is used

| Order Code | Description |
|------------|--------------|
| ILEC | End cap (x1) |



CABLE GLAND

- M20 x 1.5mm cable gland

| Order Code | Description |
|------------|-------------------------|
| ILCG | M20 x 1.5mm cable gland |



BLANKING COVER PLATES

- Blanking cover plates to snap-fit to trunking
- Available in nominal 600mm or 1500mm sizes
- Finished in white (RAL 9016)

| Order Code | Description | L (mm) |
|------------|-----------------------------|--------|
| ILBC2 | 600mm blanking cover plate | 570 |
| ILBC5 | 1500mm blanking cover plate | 1416 |



SURFACE FIXING CLAMP

- Surface fixing clamp for mounting to 'T' bar ceilings
- Surface fixing clamp for mounting to solid ceilings with 6mm dia. fixing hole
- 2 per trunking length required

| Order Code | Description | L (mm) | W (mm) | H (mm) |
|------------|-------------------------------------|--------|--------|--------|
| ILSMT | Surface mount on to a T-Bar ceiling | 55 | 32 | 17 |
| ILSM | Surface mount on to a solid ceiling | 55 | 32 | 17 |



WIRE SUSPENSION

- 3m wire suspension with ceiling mounted hook and clip/bolt for fixing to Trunking Rail
- 1.5mm dia. steel wire with stainless steel hook and clip
- Maximum weight 30kg
- 2 per trunking length required

| Order Code | Description | L (mm) | Dia. (mm) |
|------------|---|--------|-----------|
| ILWS | 3m wire suspension kit with hook and clip | 3000 | 1.5 |



TERMINAL BLOCK

- 11 pole terminal block

| Order Code | Description |
|------------|------------------------|
| ILTB11 | 11 pole terminal block |

Tamlite Lighting Sales Centre

Tamlite Field Sales Centre,
Park Farm Industrial Estate,
Redditch, Worcestershire,
B98 0HU

T. 01527 517 777
E. sales@tamlite.co.uk
W. tamlite.co.uk

Over 50 years lighting for a **Living**

As a UK manufacturer we have one of the widest lighting ranges across:



Communal



Education



Emergency



Healthcare



Industrial



Office



Retail
& Leisure



Sports



Urban



Warehouse
& Logistics