

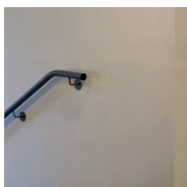
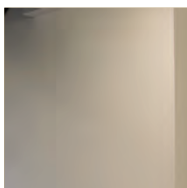
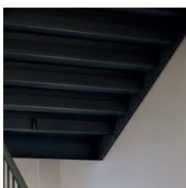
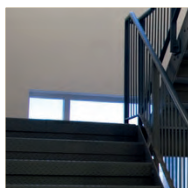
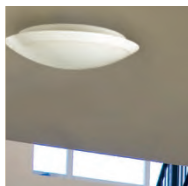


# L U N A R

Ideal for achieving design performance for corridor areas

Available with 3 lumen outputs

High quality body and diffuser



LIAQA AWARD  
WINNER 2017



Lighting for  
**a Living**

# LUNAR

## HIGH PERFORMANCE LED BULKHEAD



5 YR

IP44



4000K

3000K

### FEATURES

- > Available with 3 lumen outputs
- > Ideal for achieving design performance for corridor areas (100 lux)
- > High quality body and diffuser
- > Side conduit entry
- > Integral emergency option
- > Full range of gear options including dimmable, DALI and emergency available
- > CRI: Ra>80
- > Up to 92 lumens per Watt efficacy
- > 50,000 hours lifetime (L70/B50)

### CONSTRUCTION

- > Polycarbonate body and diffuser finished in white
- > 20mm knock-out conduit entries on rear and side of body
- > Supplied as standard with neutral white (4000K) LED

### TO SPECIFY ORDER

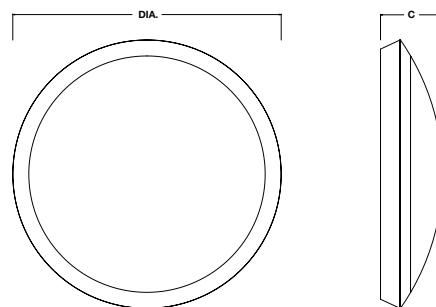
Circular IP44 white / opal LED bulkhead as per TamLite LUNAR range

### INSTALLATION NOTES

Wall or ceiling fix via rear or side (x2) knock-outs and wired via rear cable entry

### OPTIONS

- /HFS** Microwave movement sensor
- /HFD** Digital dimmable version
- /HFSD** Dimmable microwave movement sensor
- /DALI** DALI dimming control gear
- /M3** 3 hours integrated emergency
- /WW** Warm white (3000K)

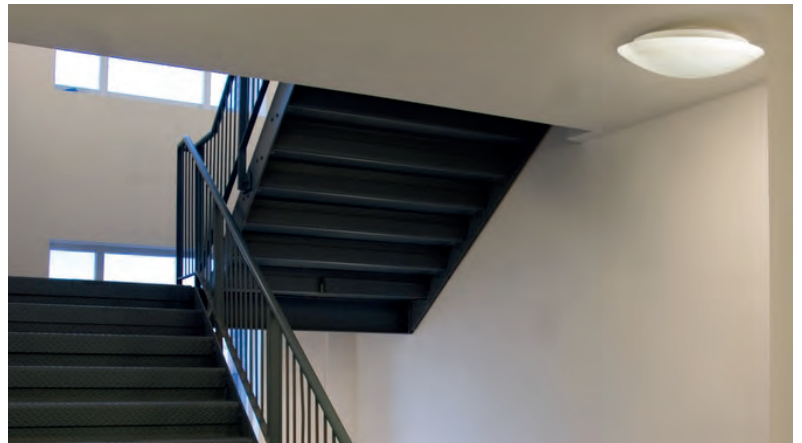


## HIGH PERFORMANCE LED BULKHEAD

Order Code	Description	lm	W	lm/W	C (mm)	Dia. (mm)	kg
LUN110NW	13W - 4000K	1100	13	85	105	454	2.2
LUN220NW	24W - 4000K	2200	24	92	105	454	2.2
LUN300NW	34W - 4000K	3000	34	88	105	454	2.2



COMMUNAL - IDEAL FOR ACHIEVING DESIGN  
PERFORMANCE FOR CORRIDOR AREAS



# Contact Us

## Sales Centre

Tamlite Field Sales Centre,  
Park Farm Industrial Estate,  
Redditch, Worcestershire,  
B98 0HU

T. +44 1527 517 777  
E. [sales@tamlite.co.uk](mailto:sales@tamlite.co.uk)  
W. [tamlite.co.uk](http://tamlite.co.uk)

