



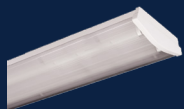
PRODUCTS USED



SLATE - High output Wall Light



ORION - Decorative circular bulkhead



WAVE - Surface linear (Bespoke) module



ELEGANCE - Decorative circular bulkhead with array

Creating a well-lit, versatile and comfortable environment, while keeping energy costs low

Nottingham City Homes (NCH) are undergoing a major refurbishment project, improving the quality of its independent living accommodation. The upgrade was necessary to reduce energy consumption for NCH. TamLite luminaires were fitted with occupancy and daylight sensors to minimise light usage.

Indoor common areas were fitted with ORION and ELEGANCE communal solutions. These products have a range of vision control versions, including the corridor function. This ensures that the light is constantly dimmed at 10%, which offers safety and security until the fitting is fully approached, making it ideal for housing, communal and care home environments.

Exterior spaces were fitted with vandal resistant HURRICANE EYELID bulkheads.



LIAQA AWARD
WINNER 2017

