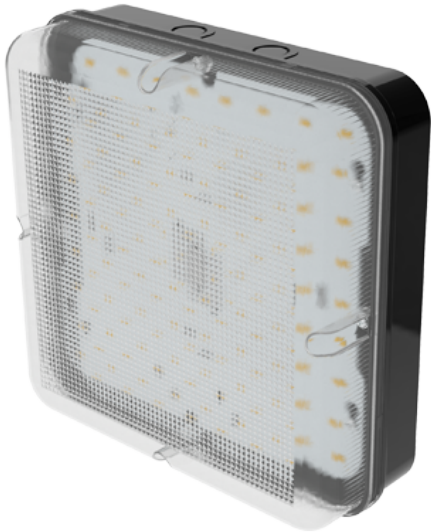


Order Code: XCBHSBPX1

Prismatic diffuser - 3000K-6000K + Wattage Selectable - Black



Features

- Suitable for exterior commercial and industrial applications
- Wattage [8W,10W,12W] adjustable via 3-way selector switch
- CCT [3000K/4000K/6000K] adjustable via 3-way selector switch

Construction

- Modular [emergency](#) and [microwave sensor](#)'s available for quick and easy conversion of a standard fitting
- For additional control, please use [X1 Bulkhead Remote](#) [Sold Separately]

Installation Notes

4-point screw fixing
Conduit side entry points for surface mount cable entry
Loop-in, loop-out push-fit terminal block for quick tool-free instalation

Technical Data

General		Electrical	
Luminaire Wattage (W)	8W/12W/16W	Rated Input Current (A)	0.04 to 0.07
Weight (kg)	0.71	Power Factor (pf)	0.82 to 0.92
Operating Temperature (ta °C)	0° to 25°	Input Voltage Range (VAC)	198 to 264
Light Output		Inrush Current Peak (A)	2.08
Lumens (lm)	1200-2000	Surge Protection (kV)	1
Efficacy (lm/W)	153	Conductor Size (mm)	0.5 to 2.5
LED		Terminal Type	4 pole piano key
CRI	80		
Macadam Elipses	0.4 to 0.8		
Driver			
Driver Current (mA)	140/215/280		
Forward Voltage (V)	48.5 to 52.5		

Order Code: XCBHSBPX1
Prismatic diffuser - 3000K-6000K + Wattage Selectable - Black

Dimensions

A (mm)	252
B (mm)	252
C (mm)	92

Line Drawing

