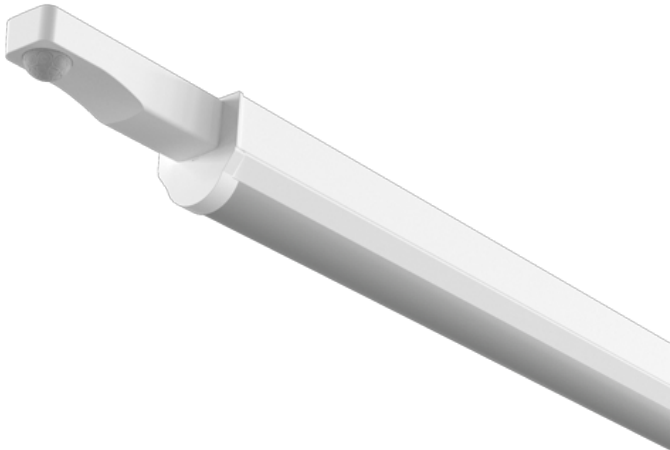


Order Code: XCBT2X1M3P

X1 Batten - 600mm - CCT [3000K/4000K/6000K] + Wattage Selectable - Emergency - Batten fit PIR



Features

- Ideal for replacement of linear fluorescent fixtures
- Suitable for general domestic and commercial use
- CCT [3000K/4000K/6000K] adjustable via 3-way selector switch

Construction

- Slimline steel body finished in white (RAL 9016)
- High quality opal diffuser to reduce glare
- Integral emergency option available
- Loop in/out mains connector
- Conduit and BESA fixing points for end or rear cable entry

Installation Notes

Centrally-mounted loop-in, loop-out push fit terminal block



Technical Data

General

Luminaire Wattage (W)	11W/13W/15W/18W
Weight (kg)	1.28
Operating Temperature (ta °C)	45

Light Output

Lumens (lm)	1300 to 2300
Efficacy (lm/W)	132

LED

CRI	85
Macadam Elipses	5

Driver

Driver Current (mA)	200 , 250 , 300 , 350
Forward Voltage (V)	25 to 57

Emergency

Emergency Lumen Operating	264
Emergency Wattage (W)	2

Electrical

Rated Input Current (A)	0.09
Power Factor (pf)	0.83 to 0.92
Input Voltage Range (VAC)	220 to 240
Inrush Current Peak (A)	175
Surge Protection (kV)	L-N 1KV, LN-PG 2KV
Conductor Size (mm)	0.5 to 2.5
Terminal Type	4 pole piano key

Order Code: XCBT2X1M3P

X1 Batten - 600mm - CCT [3000K/4000K/6000K] + Wattage Selectable - Emergency - Batten fit PIR

Dimensions

A (mm)	841
B (mm)	55
C (mm)	58

Line Drawing

