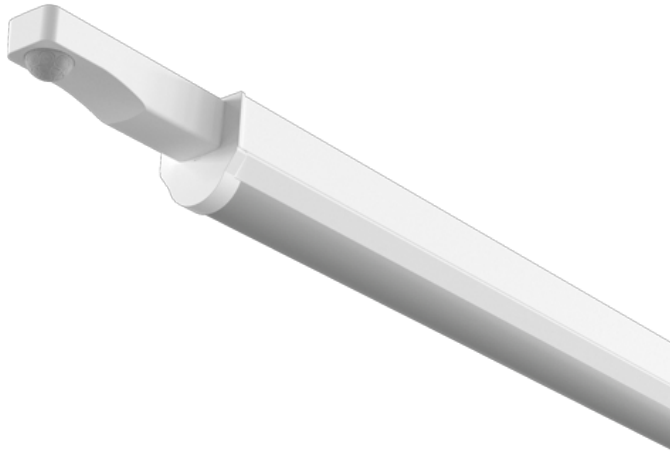


### Order Code: XCBT5X1M3P

X1 Batten - 1500mm - CCT [3000K/4000K/6000K] + Wattage Selectable - Emergency - Batten fit PIR



#### Features

- Ideal for replacement of linear fluorescent fixtures
- Suitable for general domestic and commercial use
- CCT adjustable via 3-way selector switch [3000K/4000K/6000K]
- Batten fit PIR option available, compatible with [V2P Remote](#)

#### Construction

- Slimline steel body finished in white (RAL 9016)
- High quality opal diffuser to reduce glare
- Loop in/out mains connector
- Conduit and BESA fixing points for end or rear cable entry
- Factory presets set at:  
10 minute off delay  
Lux disabled

#### Installation Notes

Centrally-mounted loop-in, loop-out push fit terminal block



#### Technical Data

General		Electrical	
Luminaire Wattage (W)	31W/39W/46W/54W	Rated Input Current (A)	0.26
Weight (kg)	2.03	Power Factor (pf)	0.89 to 0.96
Operating Temperature (ta °C)	45	Input Voltage Range (VAC)	220 to 240
		Inrush Current Peak (A)	200
		Surge Protection (kV)	L-N 1KV, LN-PG 2KV
		Conductor Size (mm)	0.5 to 2.5
		Terminal Type	4 pole piano key
Light Output			
Lumens (lm)	4200 to 7600		
Efficacy (lm/W)	146		
LED			
CCT (K)	3000K/4000K/6000K		
CRI	85		
Macadam Elipses	5		
Driver			
Driver Current (mA)	200 , 250 , 300 , 350		
Forward Voltage (V)	80 to 172		
Emergency			
Emergency Lumen Operating	293		
Emergency Wattage (W)	2		

**Order Code: XCBT5X1M3P**

X1 Batten - 1500mm - CCT [3000K/4000K/6000K] + Wattage Selectable - Emergency - Batten fit PIR

Dimensions

A (mm)	1621
B (mm)	55
C (mm)	58
Fix	610

Line Drawing

