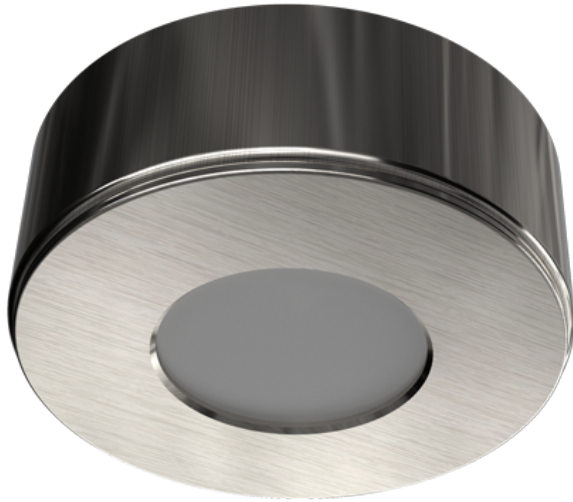


Order Code: XCCDL3CTSN

CIRCULAR CABINET LIGHT CC XCCDL - Satin Nickel - 3W - 3000K-4000K - Fixed output



Features

- LED circular under cabinet downlight
- Suitable for kitchen or wardrobe applications
- Can be surface or flush/recessed mounted
- Complete with 1.5m of mains, 2 core cable
- CCT adjustable via 2-way selector switch [3000K/4000K]

Construction

- Pressed steel body
- Frosted polycarbonate diffuser
- Integral driver circuitry with mains input



Technical Data

General		Electrical	
Luminaire Wattage (W)	3	Rated Input Current (A)	0.03
Weight (kg)	0.17	Power Factor (pf)	0.42
Operating Temperature (ta °C)	-20 to 50	Input Voltage Range (VAC)	220-240
		Inrush Current Peak (A)	110
		Surge Protection (kV)	0.5kV
		Conductor Size (mm)	0.5
		Terminal Type	2 core flex
Light Output			
Lumens (lm)	240		
Efficacy (lm/W)	80		
LED			
CCT (K)	3000K/4000K		
CRI	80		
Macadam Elipses	<5		
Driver			
Driver Current (mA)	120		
Forward Voltage (V)	18		

Order Code: XCCDL3CTSN

CIRCULAR CABINET LIGHT CC XCCDL - Satin Nickel - 3W - 3000K-4000K - Fixed output

Dimensions

C (mm)	27
Fix	48
Dia. (mm)	73

Line Drawing

