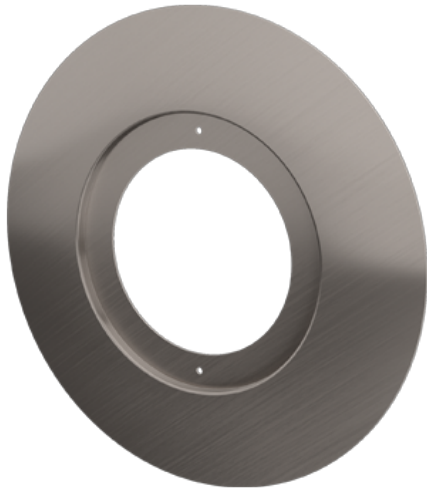


Order Code: XCFRX1CPSN
Satin Nickel Conversion Plate for X1 FRD



Features

- Compatible with cut out of 65mm - 120mm
- Compatible with [X1 FRD](#)

Construction

- Pressed steel

Technical Data

Order Code: XCFRX1CPSN
Satin Nickel Conversion Plate for X1 FRD

Dimensions

A (mm)	73
C (mm)	6
Dia. (mm)	170

Line Drawing

